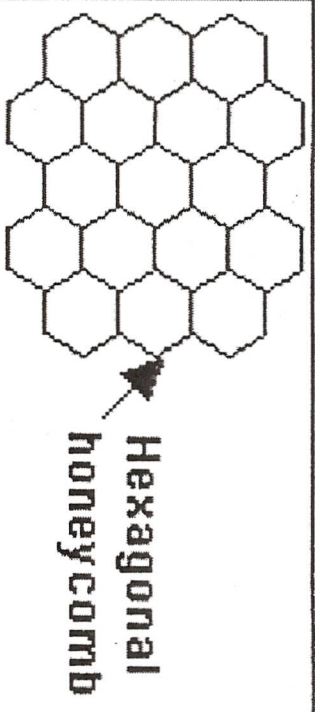


Honey Bee



2 Compound Antennae

Antennae

Black stripes on orange

Hindwing

Forewing

Thorax

Abdomen

Head

Simple eyes

Mandibles (jaws)

Tube-like tongue (proboscis)

6 Jointed legs

Wax glands under the abdomen

Stinger - only on females

Pollen basket

EGG

Queen per hive

miles-maximum flight range

ANTENNAE

Antennae

Queen Worker

Although small, and young, you are important! As a worker, you are a female. Tomorrow, you will be fanning the hive to keep it cool.

As an older worker, you will gather nectar and pollen, with the ultra-important job of pollinating the world's plants!

Worker

Drone

15

mph maximum flight speed

You are going to lay 2,000 eggs today, because you are the only queen bee in the hive. You won't be lonely, though! You'll be surrounded by drones and workers.

You are destined for royalty! But at the moment you are a larva being fed royal jelly fit for a queen! You will become a queen after becoming a pupa.



Right now, you are just lounging around the hive. As the drone, your main job will be to mate with the queen. Sadly, you will get kicked out when the weather turns cold.

During your life, you will gather nectar to make only 1/12 teaspoon of honey! Together, the workers in your hive will fly 55,000 miles to create 1 pound of honey!

Types of bees - Queen, drone, worker

Queen larva Worker

You will find a new source of nectar today, and will share your good fortune with the hive by dancing for them!

Farmer

You are going to become a RICH farmer! Thanks, in part, to the pollination by honey bees!

Worker

9

Legs

ADULT BEE

4 Wings

5 minutes per trip

PUPA

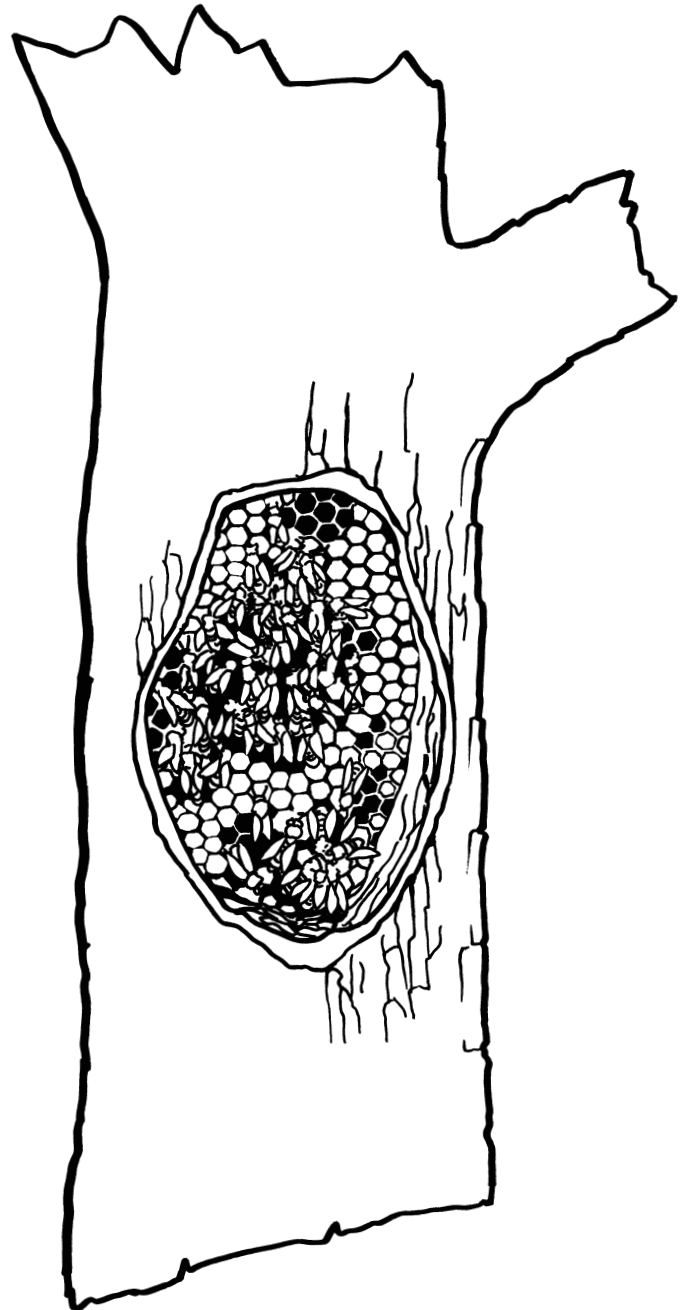
To make your Bee Fortune Teller: Cut this end off, on the line, so that you have a square. Fold the square diagonally, corner to corner. Then fold the two opposite corners of the triangle together, forming a smaller triangle. Unfold the paper. With the blank side of the paper facing up, fold each corner to the middle, where the creases intersect. Turn this smaller square over, and again fold each corner to the middle. Fold the square in half. Unfold and fold in half the other way. Unfold and pull the four corners together to make diamond shapes. Pick up each of the four square flaps, and put your fingers inside. You will be able to move the four parts around.

Bee Houses

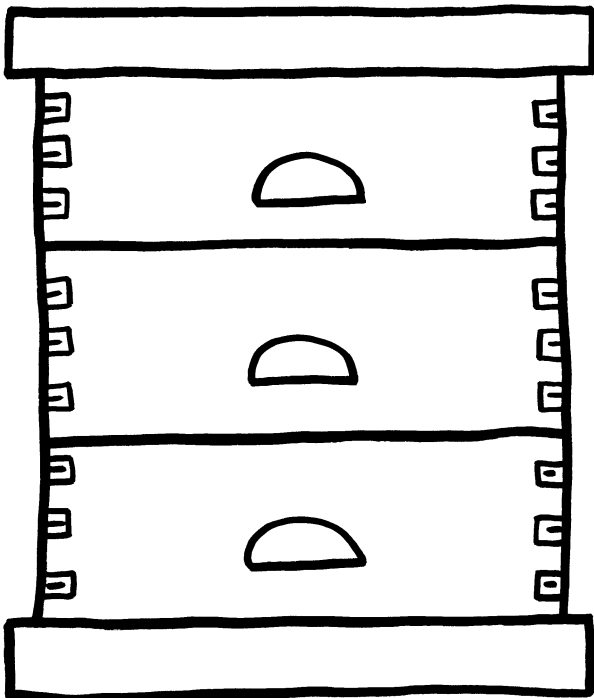
Color the 3 types of beehives below.



Traditionally, beekeepers used skeps, old-fashioned hives that were made of straw.



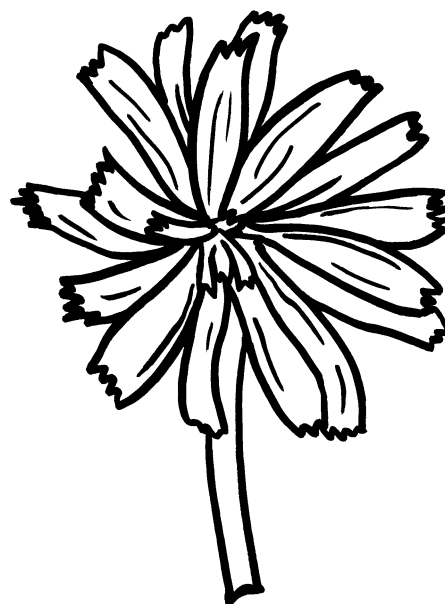
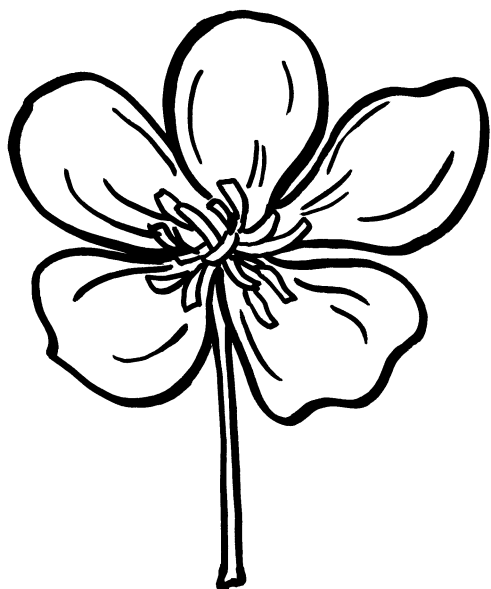
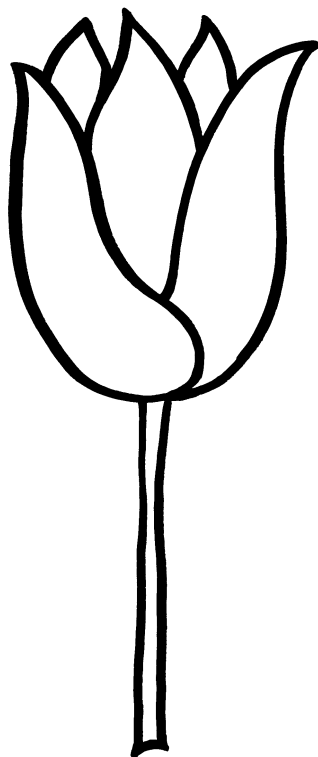
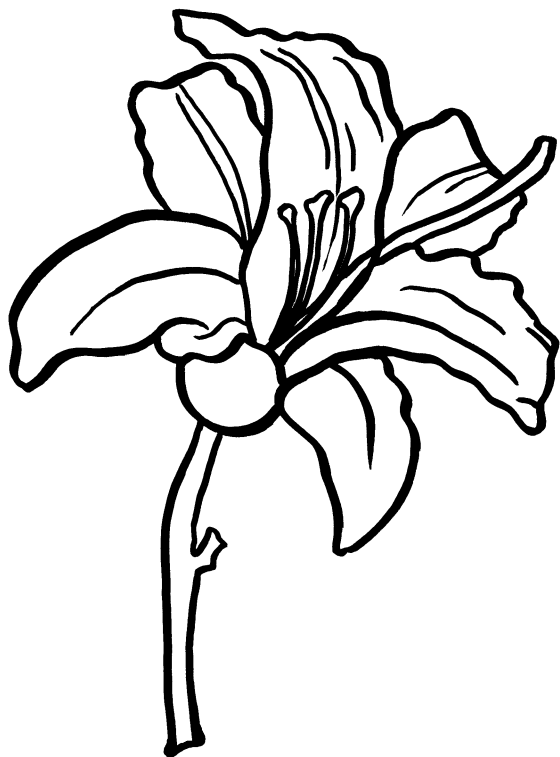
In the wild, bees build their hives in hollow trees.



A modern beekeeper's hive is made of wood and is divided into layers.

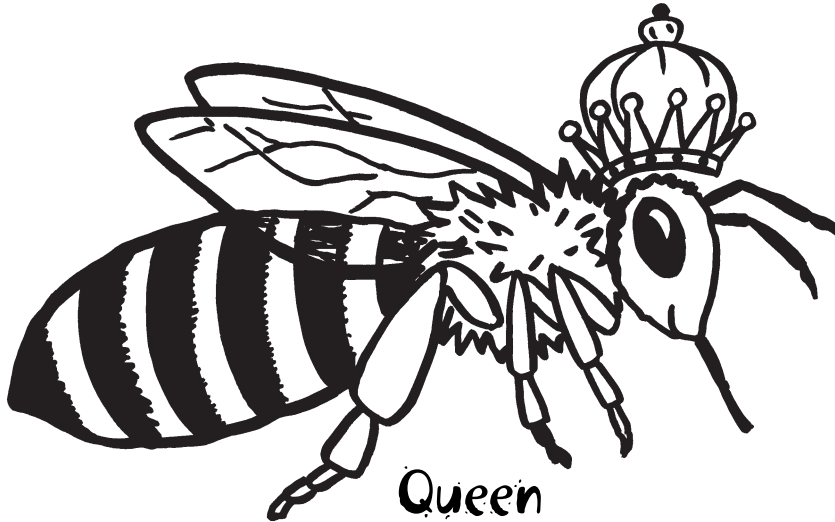
What Bees See

Bees are attracted most to flowers that are blue, purple, and yellow. Color the flowers below using the bee's favorite colors.



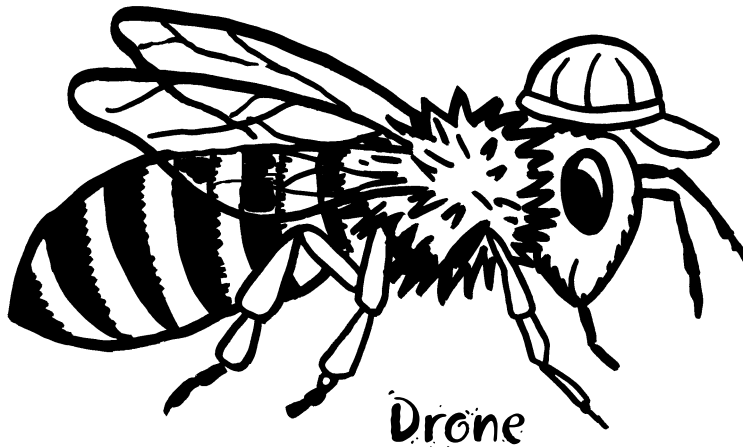
Busy as a Bee

Color the three types of honeybees.



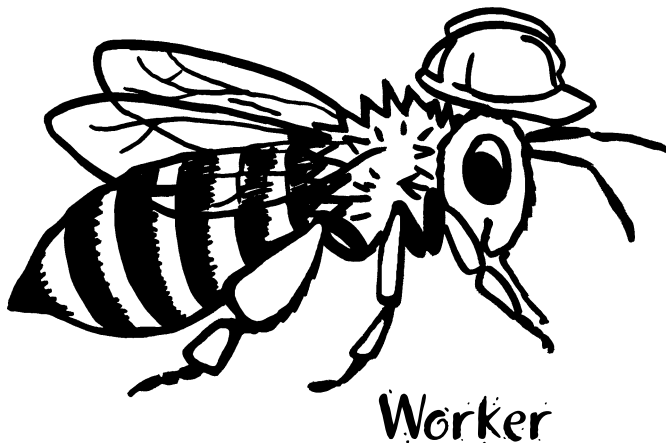
The Queen's Job

- Lays eggs, up to 1,500 in one day
- Keeps the worker bees calm



The Drone's Job

- Mates with the queen
- Keeps the worker bees happy



The Worker's Job

- Builds the hive
- Cleans and guards the hive
- Takes care of the queen
- Feeds all of the bees
- Cares for the young bees
- Collects pollen and nectar from flowers
- Makes honey for food